

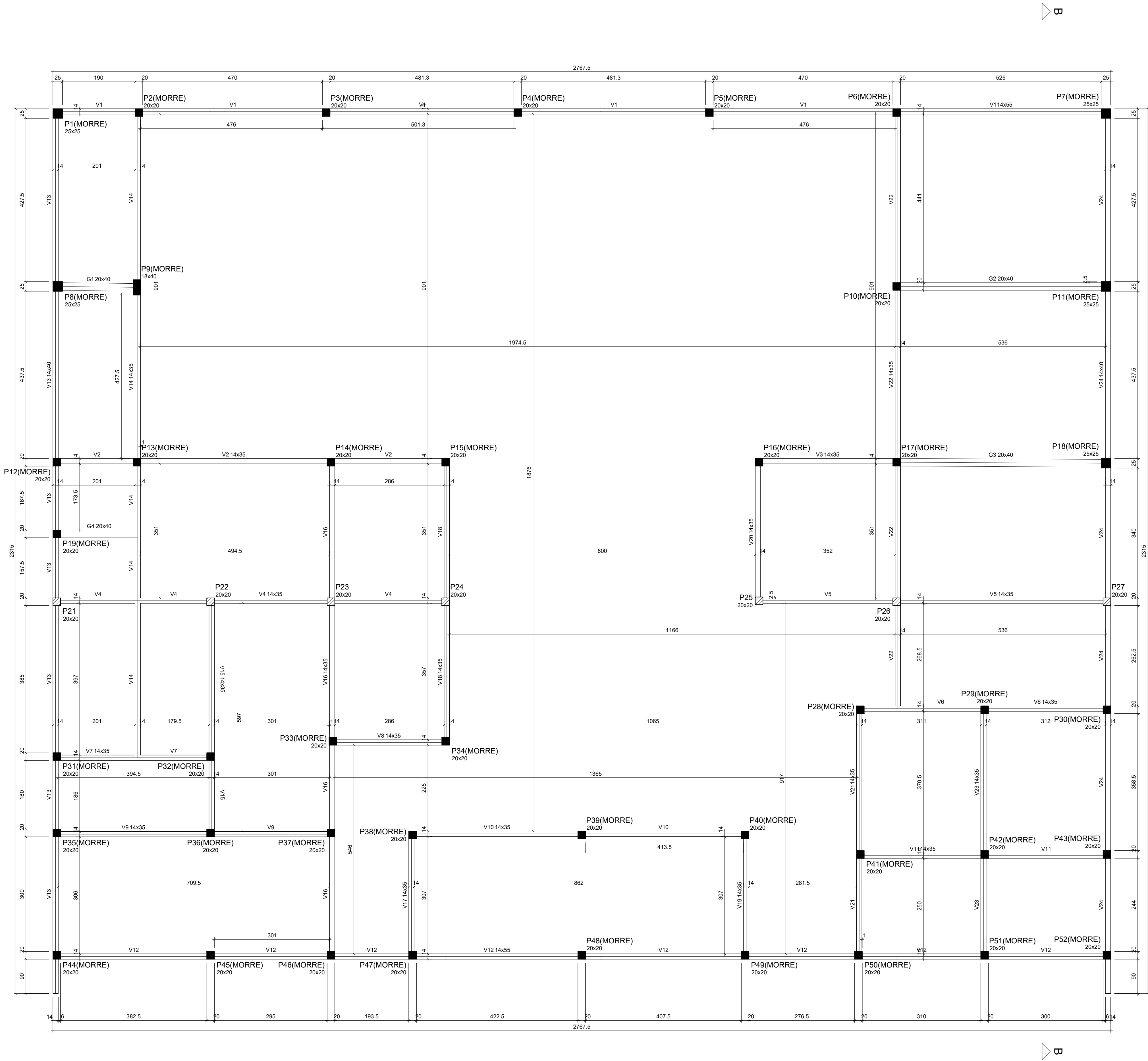
| Vigas |            |               |
|-------|------------|---------------|
| Nome  | Seção (cm) | Elevação (cm) |
| VM1   | W410x38.8  | -105          |
| VM2   | W410x38.8  | -105 / -330   |
| VM3   | W410x38.8  | -105 / -330   |
| VM4   | W410x38.8  | -105 / -330   |
| VM5   | W410x38.8  | -105 / -330   |
| VM6   | W410x38.8  | -105 / -330   |
| VM7   | W410x38.8  | -105 / -330   |
| VM8   | W410x38.8  | -105 / -330   |
| VM9   | W410x38.8  | -105 / -330   |
| VM10  | W410x38.8  | -105 / -330   |
| VM11  | W410x38.8  | -105 / -330   |
| VM12  | W410x38.8  | -105 / -330   |
| VM13  | W410x38.8  | -105 / -330   |
| VM14  | W410x38.8  | -105 / -330   |
| VM15  | W410x38.8  | -105 / -330   |
| VM16  | W410x38.8  | -105 / -330   |
| VM17  | W410x38.8  | -105 / -330   |

| Características dos materiais |               |
|-------------------------------|---------------|
| fck (kgf/cm²)                 | Ecs (kgf/cm²) |
| 250                           | 241500        |

| Pilares |            |               |            |
|---------|------------|---------------|------------|
| Nome    | Seção (cm) | Elevação (cm) | Nível (cm) |
| P21     | 20x20      | -105          | 565        |
| P22     | 20x20      | -105          | 565        |
| P23     | 20x20      | -105          | 565        |
| P24     | 20x20      | -105          | 565        |
| P25     | 20x20      | -105          | 565        |
| P26     | 20x20      | -105          | 565        |
| P27     | 20x20      | -105          | 565        |

| Legenda dos pilares |                 |
|---------------------|-----------------|
| ■                   | Pilar que morre |

Forma do pavimento COBERTURA (Nível 670)  
escala 1:50



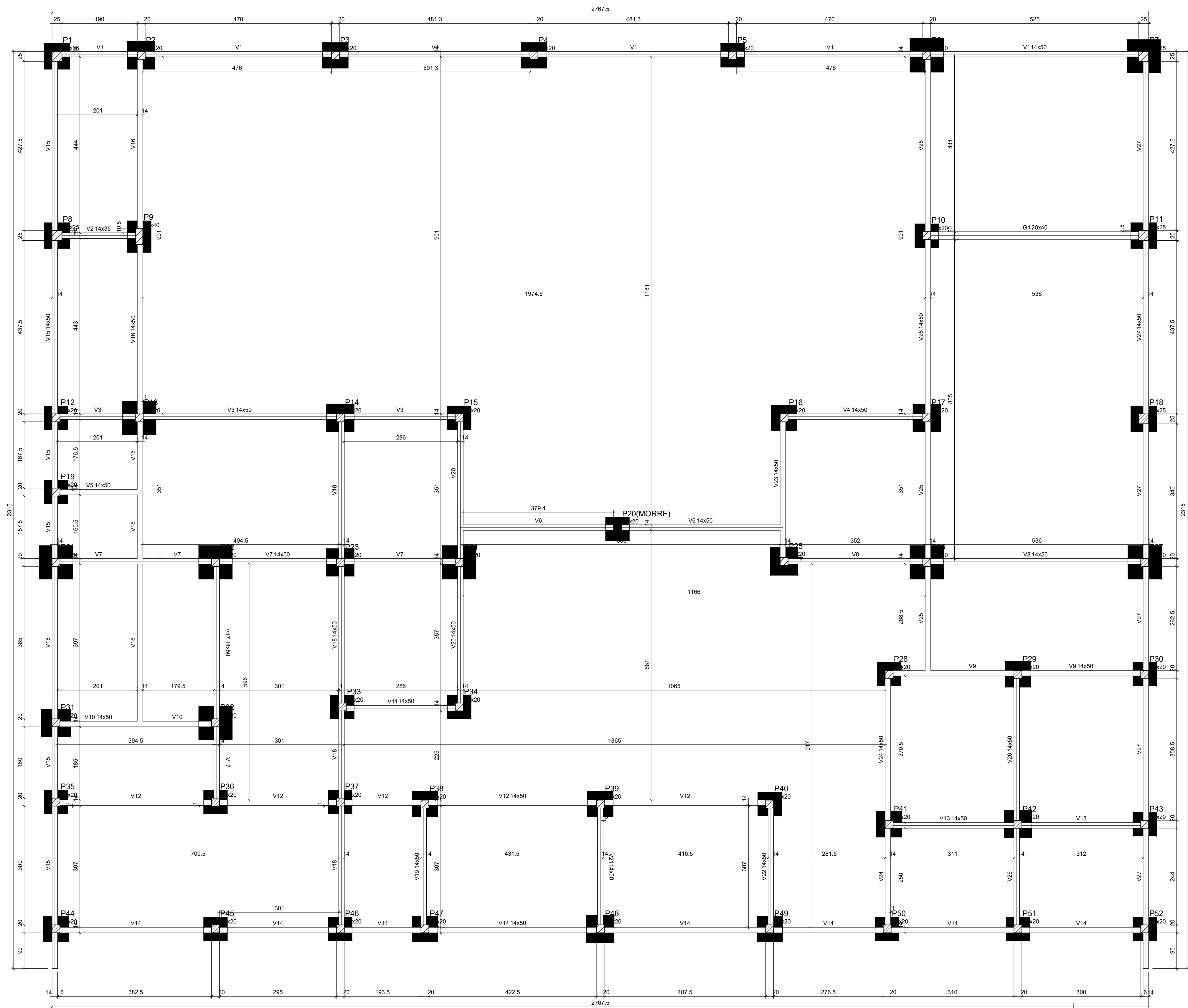
| Vigas |            |               |            |
|-------|------------|---------------|------------|
| Nome  | Seção (cm) | Elevação (cm) | Nível (cm) |
| G1    | 20x40      | 0             | 340        |
| G2    | 20x40      | 0             | 340        |
| G3    | 20x40      | 0             | 340        |
| G4    | 20x40      | 0             | 340        |
| V1    | 14x55      | 0             | 340        |
| V2    | 14x35      | 0             | 340        |
| V3    | 14x35      | 0             | 340        |
| V4    | 14x35      | 0             | 340        |
| V5    | 14x35      | 0             | 340        |
| V6    | 14x35      | 0             | 340        |
| V7    | 14x35      | 0             | 340        |
| V8    | 14x35      | 0             | 340        |
| V9    | 14x35      | 0             | 340        |
| V10   | 14x35      | 0             | 340        |
| V11   | 14x35      | 0             | 340        |
| V12   | 14x55      | 0             | 340        |
| V13   | 14x40      | 0             | 340        |
| V14   | 14x35      | 0             | 340        |
| V15   | 14x35      | 0             | 340        |
| V16   | 14x35      | 0             | 340        |
| V17   | 14x35      | 0             | 340        |
| V18   | 14x35      | 0             | 340        |
| V19   | 14x35      | 0             | 340        |
| V20   | 14x35      | 0             | 340        |
| V21   | 14x35      | 0             | 340        |
| V22   | 14x35      | 0             | 340        |
| V23   | 14x35      | 0             | 340        |
| V24   | 14x40      | 0             | 340        |

| Características dos materiais |        |  |
|-------------------------------|--------|--|
| Íck                           | Ecs    |  |
| 250                           | 241500 |  |

| Pilares |            |               |            |
|---------|------------|---------------|------------|
| Nome    | Seção (cm) | Elevação (cm) | Nível (cm) |
| P1      | 25x25      | 0             | 340        |
| P2      | 20x20      | 0             | 340        |
| P3      | 20x20      | 0             | 340        |
| P4      | 20x20      | 0             | 340        |
| P5      | 20x20      | 0             | 340        |
| P6      | 20x20      | 0             | 340        |
| P7      | 25x25      | 0             | 340        |
| P8      | 25x25      | 0             | 340        |
| P9      | 18x40      | 0             | 340        |
| P10     | 20x20      | 0             | 340        |
| P11     | 25x25      | 0             | 340        |
| P12     | 20x20      | 0             | 340        |
| P13     | 20x20      | 0             | 340        |
| P14     | 20x20      | 0             | 340        |
| P15     | 20x20      | 0             | 340        |
| P16     | 20x20      | 0             | 340        |
| P17     | 20x20      | 0             | 340        |
| P18     | 25x25      | 0             | 340        |
| P19     | 20x20      | 0             | 340        |
| P21     | 20x20      | 0             | 340        |
| P22     | 20x20      | 0             | 340        |
| P23     | 20x20      | 0             | 340        |
| P24     | 20x20      | 0             | 340        |
| P25     | 20x20      | 0             | 340        |
| P26     | 20x20      | 0             | 340        |
| P27     | 20x20      | 0             | 340        |
| P28     | 20x20      | 0             | 340        |
| P29     | 20x20      | 0             | 340        |
| P30     | 20x20      | 0             | 340        |
| P31     | 20x20      | 0             | 340        |
| P32     | 20x20      | 0             | 340        |
| P33     | 20x20      | 0             | 340        |
| P34     | 20x20      | 0             | 340        |
| P35     | 20x20      | 0             | 340        |
| P36     | 20x20      | 0             | 340        |
| P37     | 20x20      | 0             | 340        |
| P38     | 20x20      | 0             | 340        |
| P39     | 20x20      | 0             | 340        |
| P40     | 20x20      | 0             | 340        |
| P41     | 20x20      | 0             | 340        |
| P42     | 20x20      | 0             | 340        |
| P43     | 20x20      | 0             | 340        |
| P44     | 20x20      | 0             | 340        |
| P45     | 20x20      | 0             | 340        |
| P46     | 20x20      | 0             | 340        |
| P47     | 20x20      | 0             | 340        |
| P48     | 20x20      | 0             | 340        |
| P49     | 20x20      | 0             | 340        |
| P50     | 20x20      | 0             | 340        |
| P51     | 20x20      | 0             | 340        |
| P52     | 20x20      | 0             | 340        |

| Legenda dos pilares |                 |
|---------------------|-----------------|
|                     | Pilar que morre |
|                     | Pilar que passa |

Forma do pavimento 1 PAVIMENTO (Nível 340)  
escala 1:50



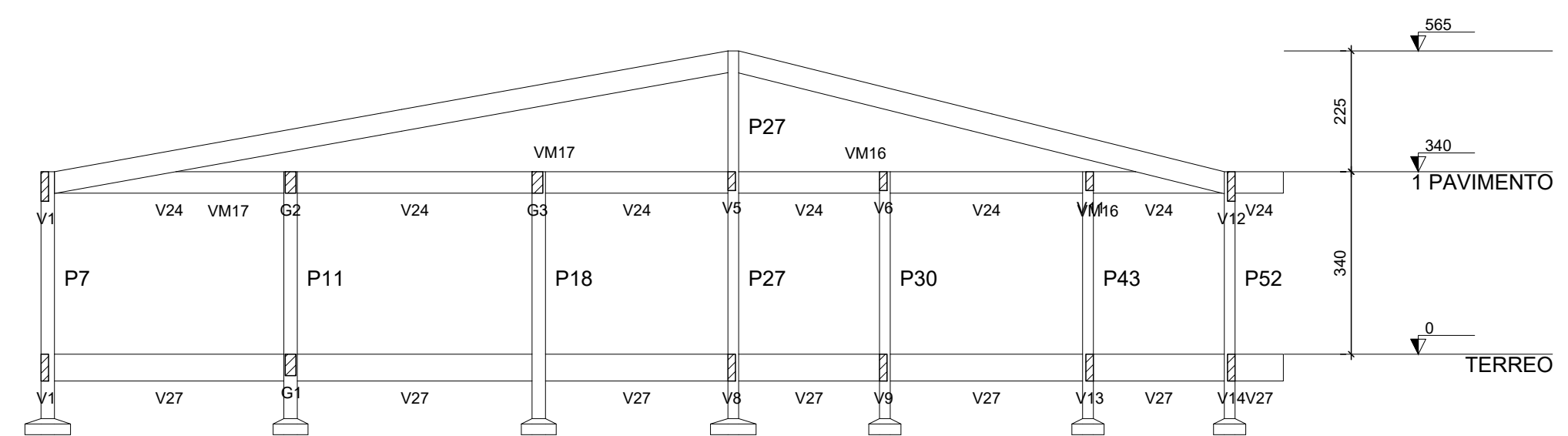
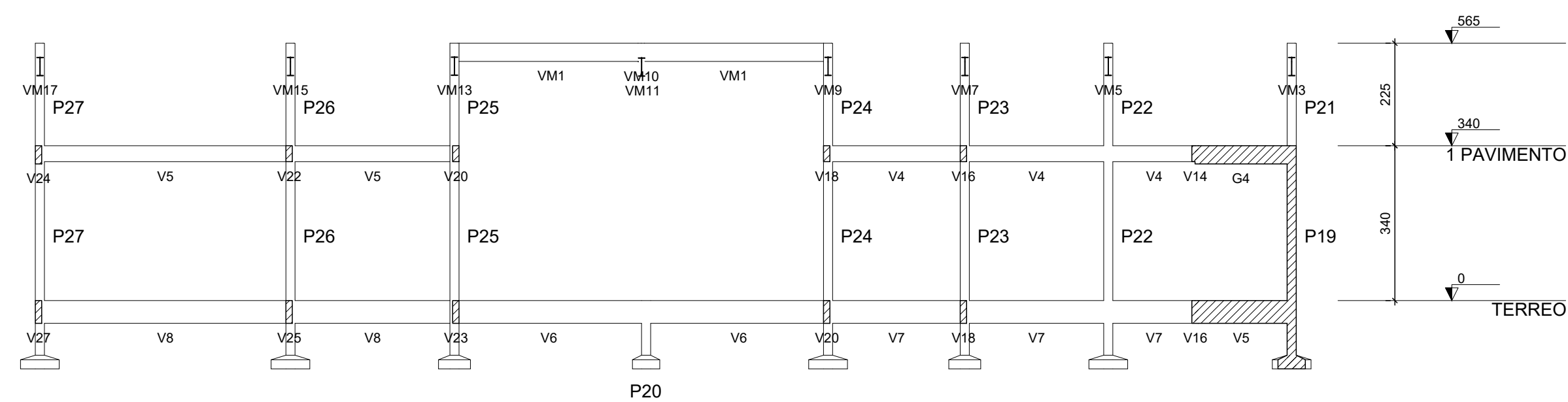
| Nome | Vigas      |               |            |
|------|------------|---------------|------------|
|      | Seção (cm) | Elevação (cm) | Nível (cm) |
| G1   | 20x40      | 0             | 0          |
| V1   | 14x50      | 0             | 0          |
| V2   | 14x35      | 0             | 0          |
| V3   | 14x50      | 0             | 0          |
| V4   | 14x50      | 0             | 0          |
| V5   | 14x50      | 0             | 0          |
| V6   | 14x50      | 0             | 0          |
| V7   | 14x50      | 0             | 0          |
| V8   | 14x50      | 0             | 0          |
| V9   | 14x50      | 0             | 0          |
| V10  | 14x50      | 0             | 0          |
| V11  | 14x50      | 0             | 0          |
| V12  | 14x50      | 0             | 0          |
| V13  | 14x50      | 0             | 0          |
| V14  | 14x50      | 0             | 0          |
| V15  | 14x50      | 0             | 0          |
| V16  | 14x50      | 0             | 0          |
| V17  | 14x50      | 0             | 0          |
| V18  | 14x50      | 0             | 0          |
| V19  | 14x50      | 0             | 0          |
| V20  | 14x50      | 0             | 0          |
| V21  | 14x50      | 0             | 0          |
| V22  | 14x50      | 0             | 0          |
| V23  | 14x50      | 0             | 0          |
| V24  | 14x50      | 0             | 0          |
| V25  | 14x50      | 0             | 0          |
| V26  | 14x50      | 0             | 0          |
| V27  | 14x50      | 0             | 0          |

| Características dos materiais |               |  |
|-------------------------------|---------------|--|
| fck (kgf/cm²)                 | Ecs (kgf/cm²) |  |
| 250                           | 241500        |  |

| Nome | Pilares    |               |            |
|------|------------|---------------|------------|
|      | Seção (cm) | Elevação (cm) | Nível (cm) |
| P1   | 25x25      | 0             | 0          |
| P2   | 20x20      | 0             | 0          |
| P3   | 20x20      | 0             | 0          |
| P4   | 20x20      | 0             | 0          |
| P5   | 20x20      | 0             | 0          |
| P6   | 20x20      | 0             | 0          |
| P7   | 25x25      | 0             | 0          |
| P8   | 25x25      | 0             | 0          |
| P9   | 18x40      | 0             | 0          |
| P10  | 20x20      | 0             | 0          |
| P11  | 25x25      | 0             | 0          |
| P12  | 20x20      | 0             | 0          |
| P13  | 20x20      | 0             | 0          |
| P14  | 20x20      | 0             | 0          |
| P15  | 20x20      | 0             | 0          |
| P16  | 20x20      | 0             | 0          |
| P17  | 20x20      | 0             | 0          |
| P18  | 25x25      | 0             | 0          |
| P19  | 20x20      | 0             | 0          |
| P20  | 20x20      | 0             | 0          |
| P21  | 20x20      | 0             | 0          |
| P22  | 20x20      | 0             | 0          |
| P23  | 20x20      | 0             | 0          |
| P24  | 20x20      | 0             | 0          |
| P25  | 20x20      | 0             | 0          |
| P26  | 20x20      | 0             | 0          |
| P27  | 20x20      | 0             | 0          |
| P28  | 20x20      | 0             | 0          |
| P29  | 20x20      | 0             | 0          |
| P30  | 20x20      | 0             | 0          |
| P31  | 20x20      | 0             | 0          |
| P32  | 20x20      | 0             | 0          |
| P33  | 20x20      | 0             | 0          |
| P34  | 20x20      | 0             | 0          |
| P35  | 20x20      | 0             | 0          |
| P36  | 20x20      | 0             | 0          |
| P37  | 20x20      | 0             | 0          |
| P38  | 20x20      | 0             | 0          |
| P39  | 20x20      | 0             | 0          |
| P40  | 20x20      | 0             | 0          |
| P41  | 20x20      | 0             | 0          |
| P42  | 20x20      | 0             | 0          |
| P43  | 20x20      | 0             | 0          |
| P44  | 20x20      | 0             | 0          |
| P45  | 20x20      | 0             | 0          |
| P46  | 20x20      | 0             | 0          |
| P47  | 20x20      | 0             | 0          |
| P48  | 20x20      | 0             | 0          |
| P49  | 20x20      | 0             | 0          |
| P50  | 20x20      | 0             | 0          |
| P51  | 20x20      | 0             | 0          |
| P52  | 20x20      | 0             | 0          |

| Legenda dos pilares |                 |
|---------------------|-----------------|
|                     | Pilar que morre |
|                     | Pilar que passa |

Forma do pavimento TERREO (Nível 0)  
escala 1:50



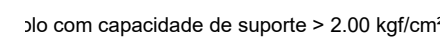
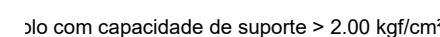
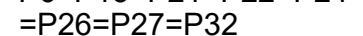
|   |       |  |                          |
|---|-------|--|--------------------------|
|  <div style="display: inline-block; vertical-align: middle;"> <p><b>MINISTÉRIO DA EDUCAÇÃO</b></p> <p><b>INSTITUTO FEDERAL DE EDUCAÇÃO, CIÊNCIA E TECNOLOGIA</b></p> <p><b>PROREITORIA DE DESENVOLVIMENTO INSTITUCIONAL</b></p> <p><b>DIRETORIA DE INFRAESTRUTURA</b></p> </div> |       |  |                          |
| <h2 style="margin: 0;">PROJETO EXECUTIVO ESTRUTURAL</h2>  |       |  |                          |
| APROVAÇÃO CORPO DE BOMBEIROS<br><br><br><br><br><br><br><br><br><br>  |       | APROVAÇÃO PREFEITURA MUNICIPAL<br><br><br><br><br><br><br><br><br><br> |                          |
| RESPONSÁVEL TÉCNICO<br><br><br><br><br><br><br><br><br><br>   |       | INSTITUTO FEDERAL DO PAUÍ<br><br><br><br><br><br><br><br><br><br>      |                          |
| Outra: _____  |       | Endereço: _____  |                          |
| <b>CONSTRUÇÃO CAMPUS 2024</b>   |       |  |                          |
| Conteúdo da prancha: <b>XXXXXXXX</b>  |       |  |                          |
| Responsável Técnico: _____  |       |  |                          |
| Op. de CAD:   | Data: | Escala:<br>indicada  | Revisão:<br><b>FINAL</b> |



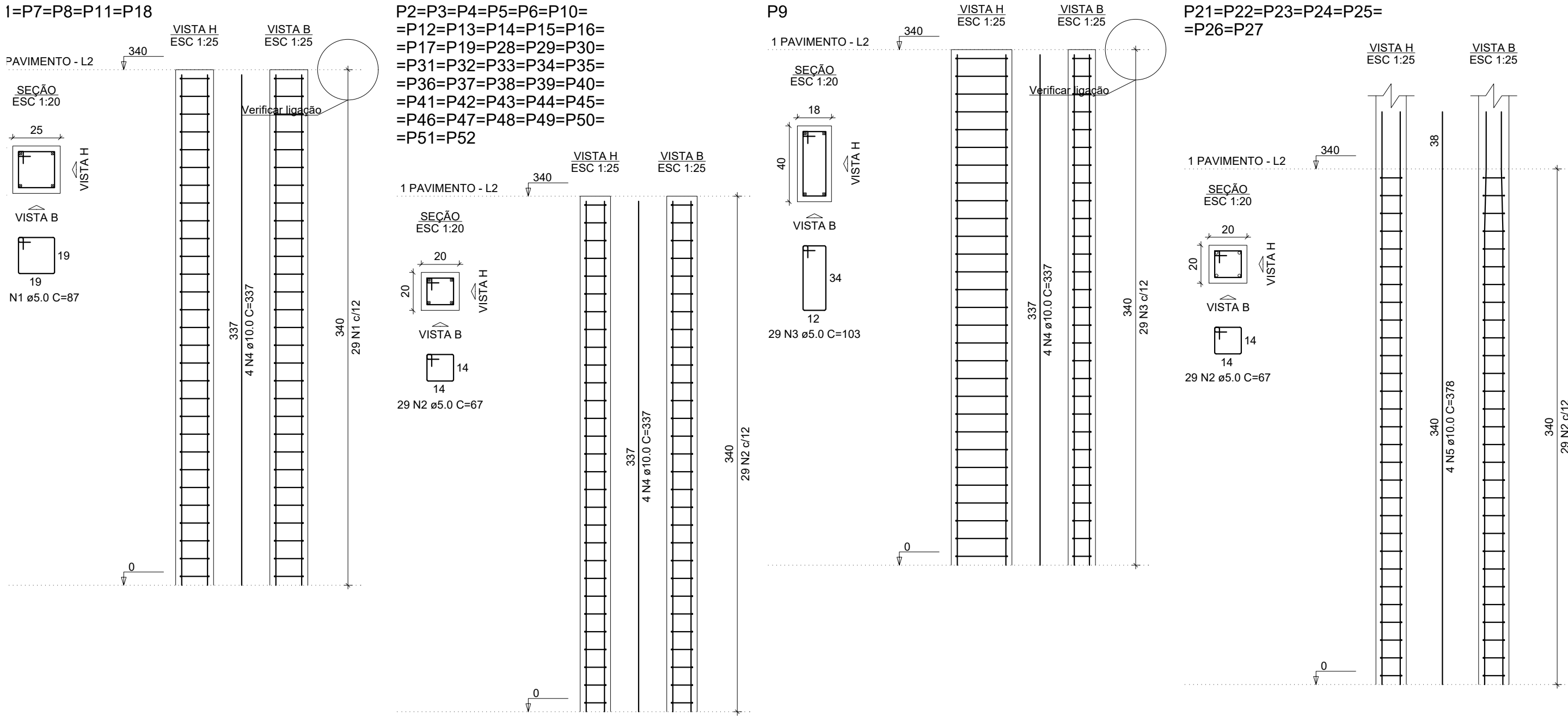
|    |      |     |   |
|----|------|-----|---|
| 10 | 10.0 | 204 | Y |
| 11 | 10.0 | 4   | Y |

|      |      |       |
|------|------|-------|
|      | 10.0 | 418.5 |
| CA60 | 5.0  | 470.6 |

Área de forma = 79.61 m<sup>2</sup>



|  |  |  |  |  |
|--|--|--|--|--|
|  |  |  |  |  |
|  |  |  |  |  |
|  |  |  |  |  |
|  |  |  |  |  |



RELAÇÃO DO AÇO

5xP1  
7xP21

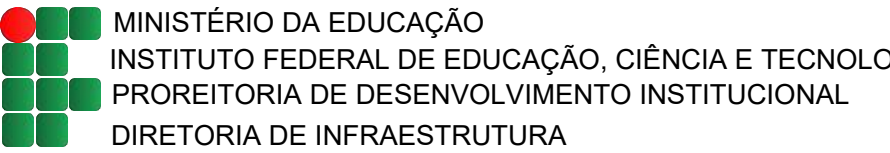
38xP2

| AÇO  | N | DIAM (mm) | QUANT |
|------|---|-----------|-------|
| CA60 | 1 | 5.0       | 145   |
|      | 2 | 5.0       | 1305  |
|      | 3 | 5.0       | 29    |
| CA50 | 4 | 10.0      | 176   |
|      | 5 | 10.0      | 28    |

RESUMO DO AÇO

| AÇO             | DIAM (mm) | C.TOTAL (m) |
|-----------------|-----------|-------------|
| CA50            | 10.0      | 699         |
| CA60            | 5.0       | 1030.4      |
| PESO TOTAL (kg) |           |             |
| CA50            | 474       |             |
| CA60            | 174.7     |             |

Volume de concreto (C-25) = 7.43 m³  
Área de forma = 143.34 m²



PROJETO EXECUTIVO ESTRUTURAL

APROVAÇÃO CORPO DE BOMBEIROS

APROVAÇÃO PREFEITURA MUNICIPAL

RESPONSÁVEL TÉCNICO

INSTITUTO FEDERAL DO PAUÍ

Outro:

CONSTRUÇÃO CAMPUS 2024

Endereço:

Conteúdo da prancha: XXXXXXXX

Responsável Técnico:

Op. de CAD:

Data:

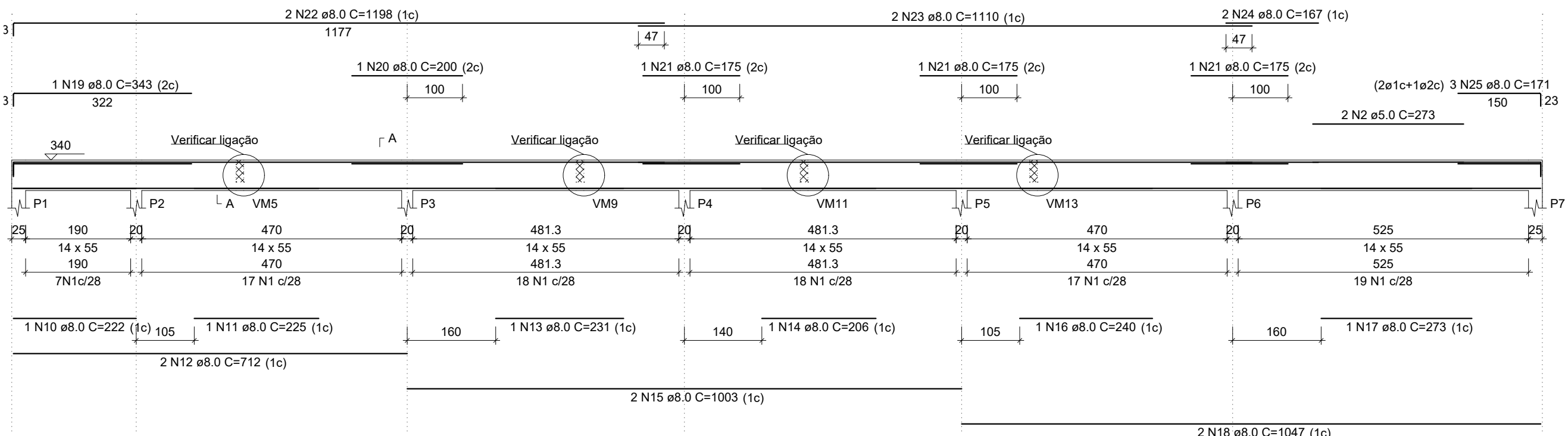
Escala:

Revisão:

FINAL

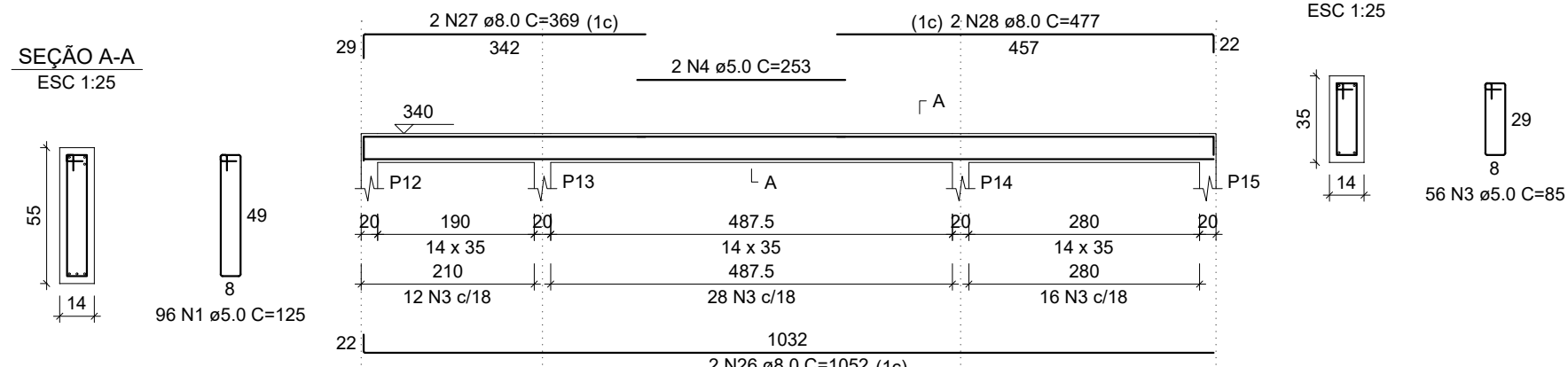
## V1

ESC 1:75



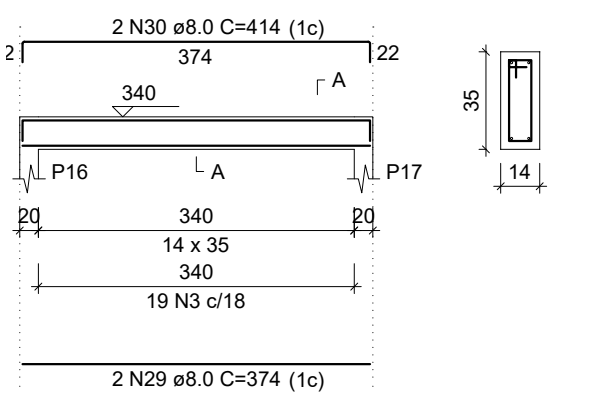
## V2

ESC 1:75



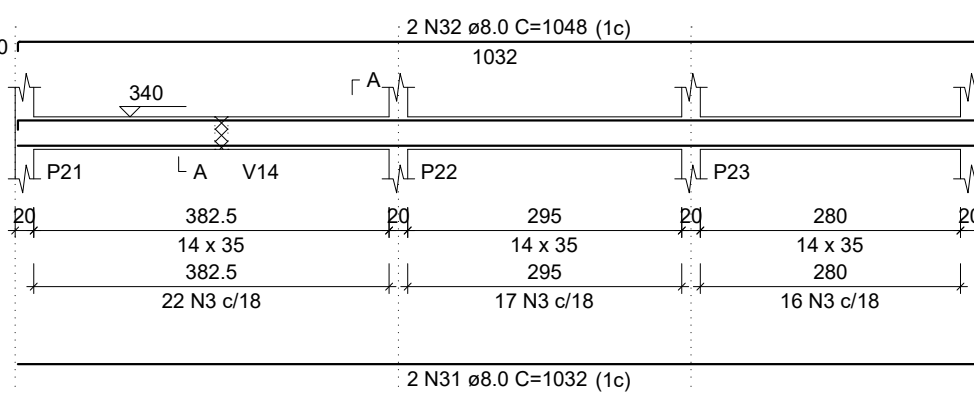
## V3

ESC 1:75



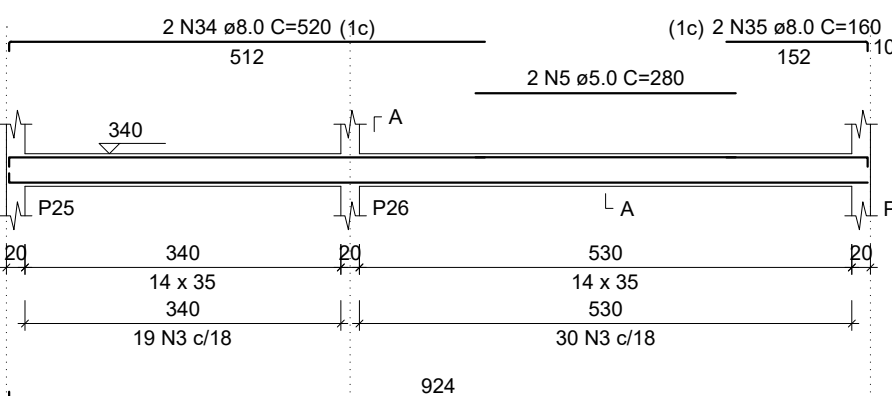
## V4

ESC 1:75



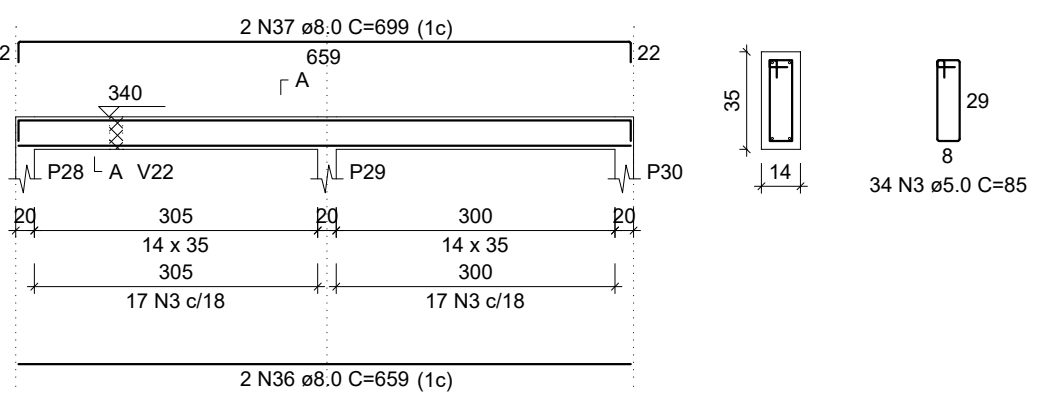
## V5

ESC 1:75



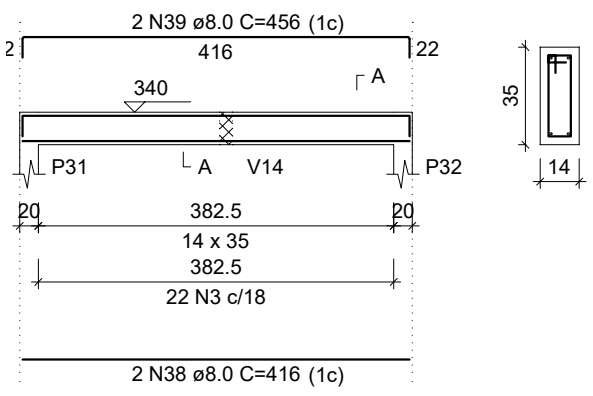
## V6

ESC 1:75



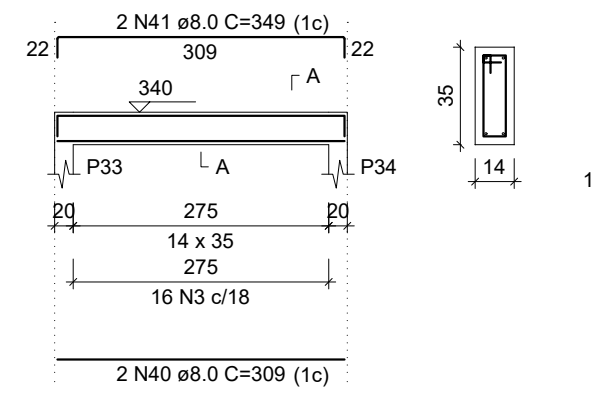
## V7

ESC 1:75



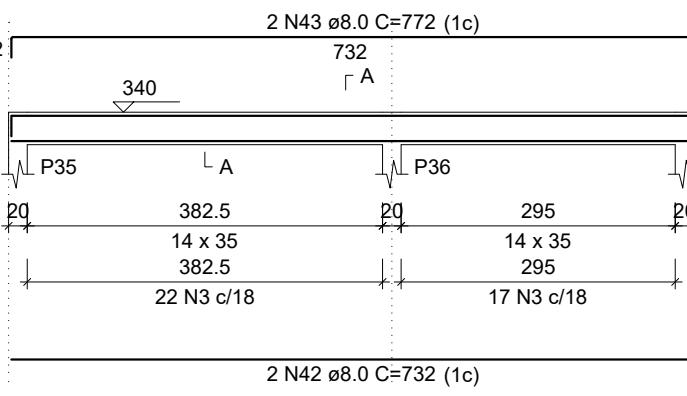
## V8

ESC 1:75



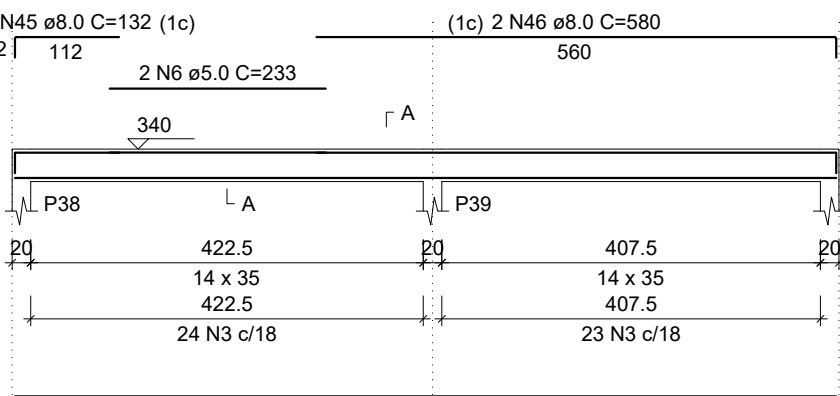
## V9

ESC 1:75



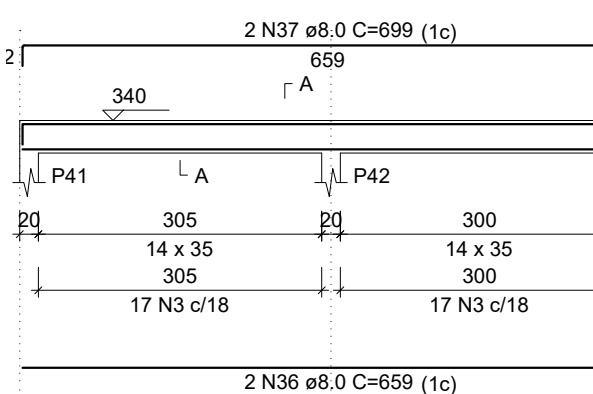
## V10

ESC 1:75



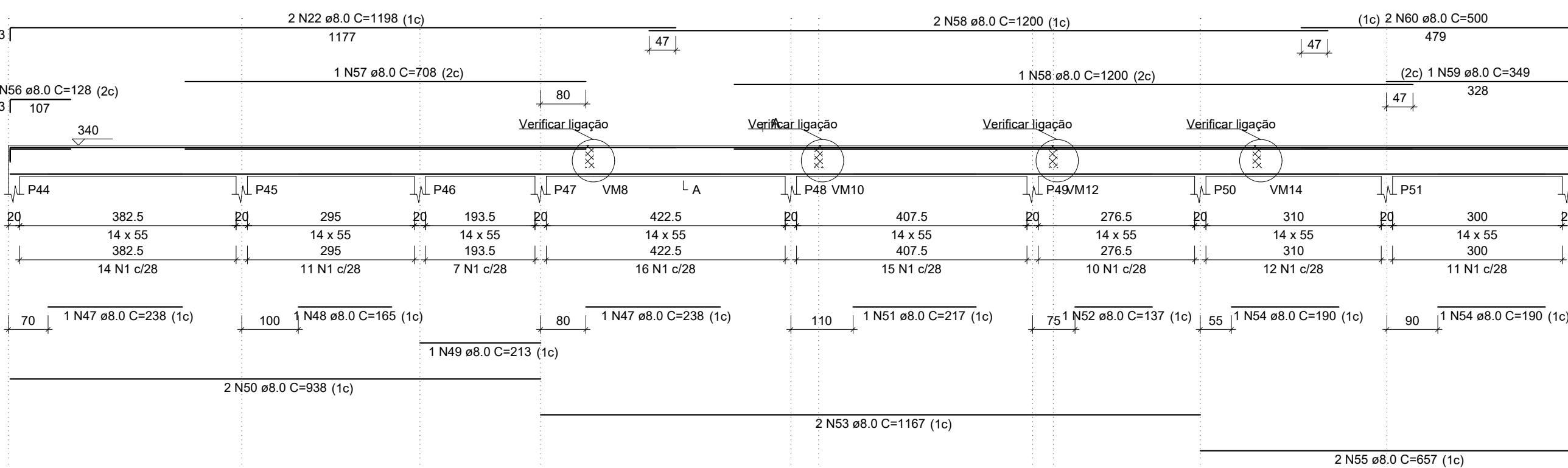
## V11

ESC 1:75



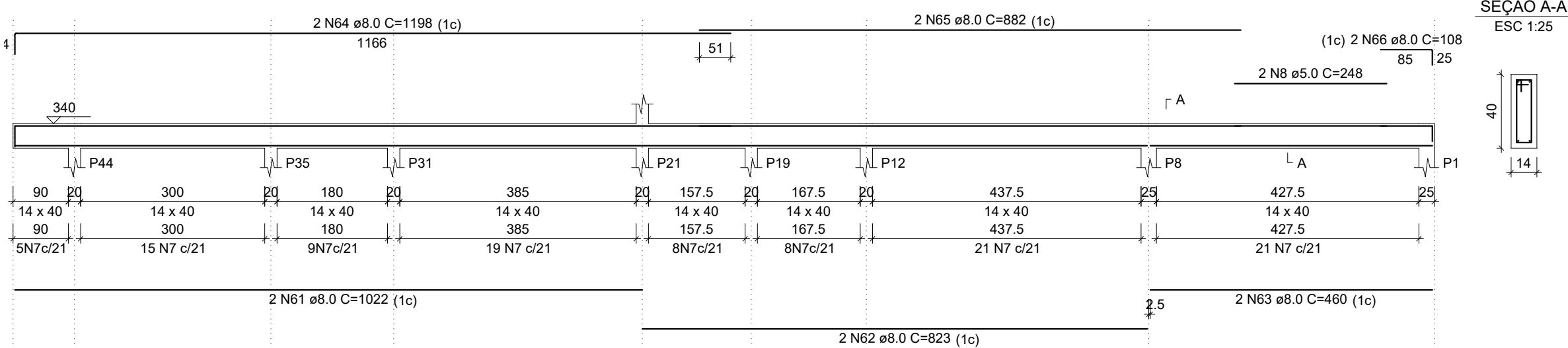
## V12

ESC 1:75



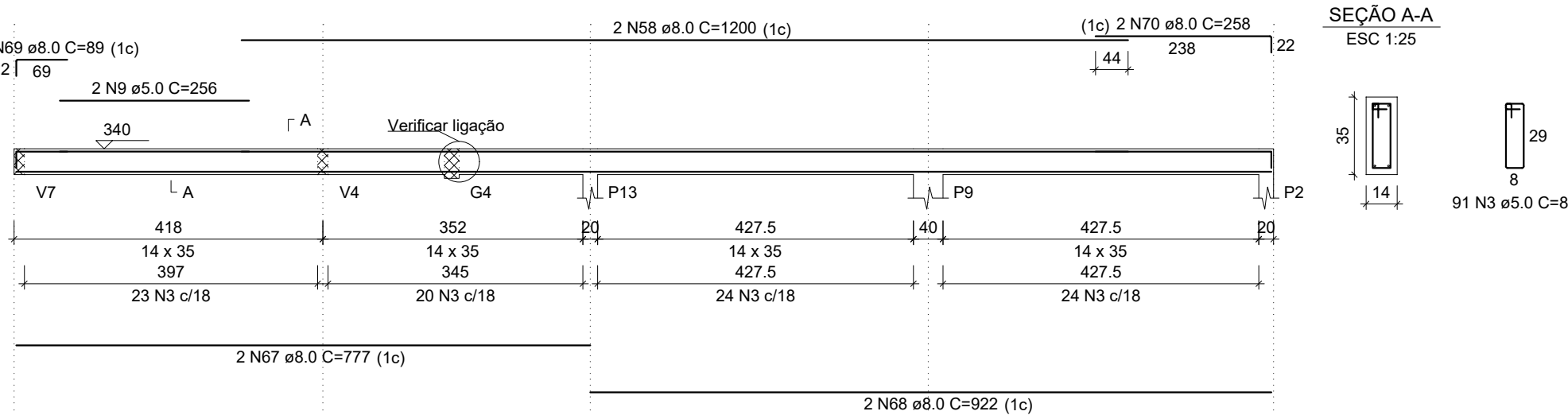
## V13

ESC 1:75



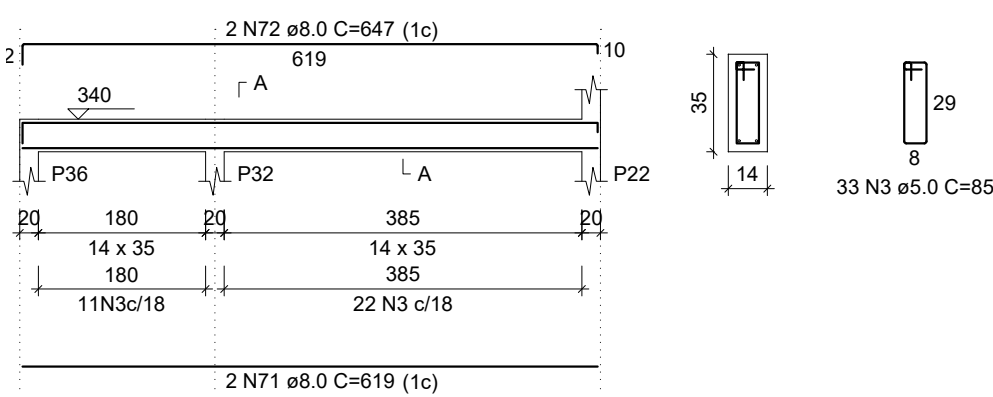
## V14

ESC 1:75



## V15

ESC 1:75



RELAÇÃO DO

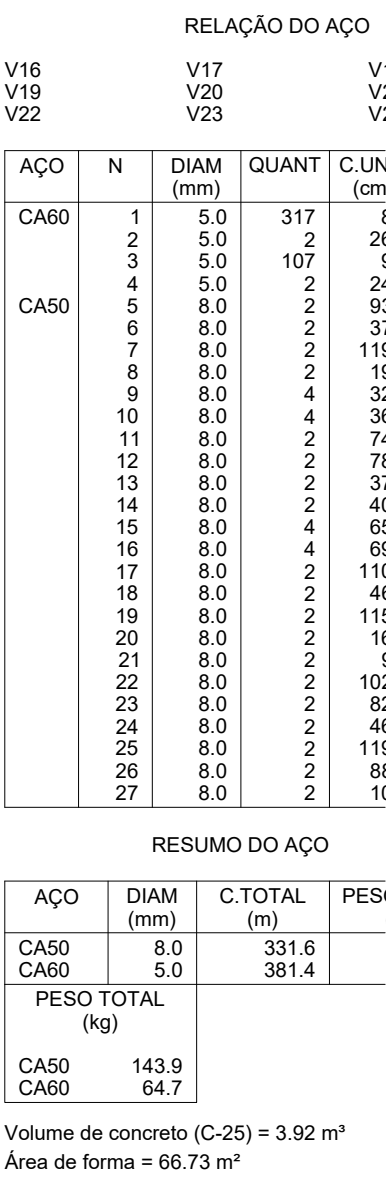
| AÇO  | N  | DIAM (mm) | QUANT |
|------|----|-----------|-------|
| CA60 | 1  | 5.0       | 192   |
| CA60 | 2  | 5.0       | 2     |
| CA60 | 3  | 5.0       | 495   |
| CA60 | 4  | 5.0       | 2     |
| CA60 | 5  | 5.0       | 2     |
| CA60 | 6  | 5.0       | 2     |
| CA60 | 7  | 5.0       | 106   |
| CA60 | 8  | 5.0       | 2     |
| CA60 | 9  | 5.0       | 2     |
| CA60 | 10 | 8.0       | 1     |
| CA60 | 11 | 8.0       | 1     |
| CA60 | 12 | 8.0       | 2     |
| CA60 | 13 | 8.0       | 1     |
| CA60 | 14 | 8.0       | 1     |
| CA60 | 15 | 8.0       | 2     |
| CA60 | 16 | 8.0       | 1     |
| CA60 | 17 | 8.0       | 1     |
| CA60 | 18 | 8.0       | 2     |
| CA60 | 19 | 8.0       | 1     |
| CA60 | 20 | 8.0       | 1     |
| CA60 | 21 | 8.0       | 3     |
| CA60 | 22 | 8.0       | 4     |
| CA60 | 23 | 8.0       | 2     |
| CA60 | 24 | 8.0       | 2     |
| CA60 | 25 | 8.0       | 3     |
| CA60 | 26 | 8.0       | 2     |
| CA60 | 27 | 8.0       | 2     |
| CA60 | 28 | 8.0       | 2     |
| CA60 | 29 | 8.0       | 2     |
| CA60 | 30 | 8.0       | 2     |
| CA60 | 31 | 8.0       | 2     |
| CA60 | 32 | 8.0       | 2     |
| CA60 | 33 | 8.0       | 2     |
| CA60 | 34 | 8.0       | 2     |
| CA60 | 35 | 8.0       | 2     |
| CA60 | 36 | 8.0       | 2     |
| CA60 | 37 | 8.0       | 4     |
| CA60 | 38 | 8.0       | 2     |
| CA60 | 39 | 8.0       | 2     |
| CA60 | 40 | 8.0       | 2     |
| CA60 | 41 | 8.0       | 2     |
| CA60 | 42 | 8.0       | 2     |
| CA60 | 43 | 8.0       | 2     |
| CA60 | 44 | 8.0       | 2     |
| CA60 | 45 | 8.0       | 2     |
| CA60 | 46 | 8.0       | 2     |
| CA60 | 47 | 8.0       | 2     |
| CA60 | 48 | 8.0       | 1     |
| CA60 | 49 | 8.0       | 1     |
| CA60 | 50 | 8.0       | 2     |
| CA60 | 51 | 8.0       | 1     |
| CA60 | 52 | 8.0       | 1     |
| CA60 | 53 | 8.0       | 2     |
| CA60 | 54 | 8.0       | 2     |
| CA60 | 55 | 8.0       | 2     |
| CA60 | 56 | 8.0       | 1     |
| CA60 | 57 | 8.0       | 1     |
| CA60 | 58 | 8.0       | 5     |
| CA60 | 59 | 8.0       | 1     |
| CA60 | 60 | 8.0       | 2     |
| CA60 | 61 | 8.0       | 2     |
| CA60 | 62 | 8.0       | 2     |
| CA60 | 63 | 8.0       | 2     |
| CA60 | 64 | 8.0       | 2     |
| CA60 | 65 | 8.0       | 2     |
| CA60 | 66 | 8.0       | 2     |
| CA60 | 67 | 8.0       | 2     |
| CA60 | 68 | 8.0       | 2     |
| CA60 | 69 | 8.0       | 2     |
| CA60 | 70 | 8.0       | 2     |
| CA60 | 71 | 8.0       | 2     |
| CA60 | 72 | 8.0       | 2     |

RESUMO DO AÇO

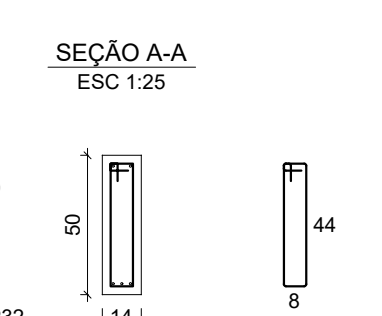
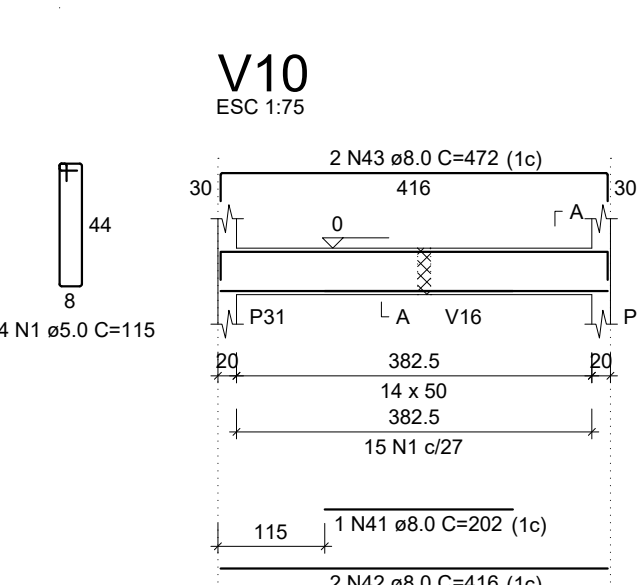
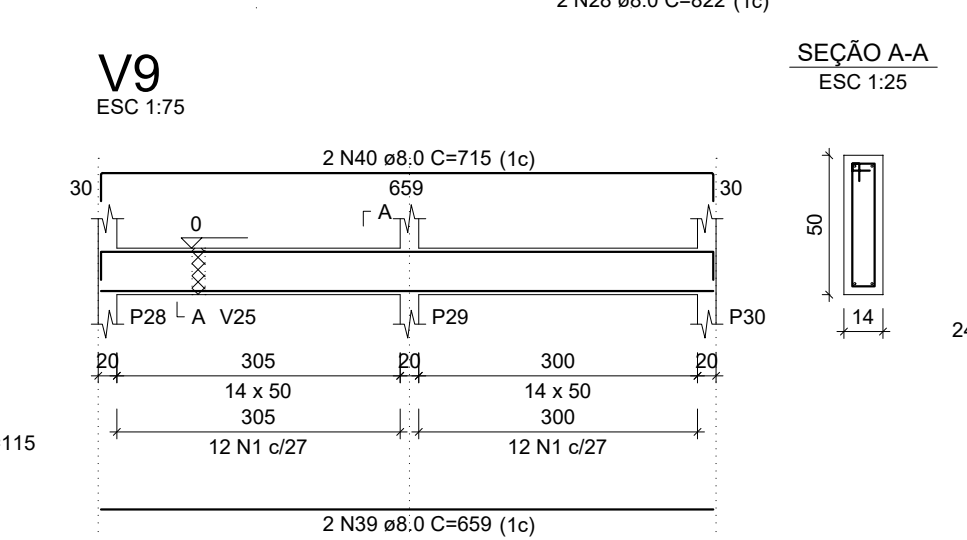
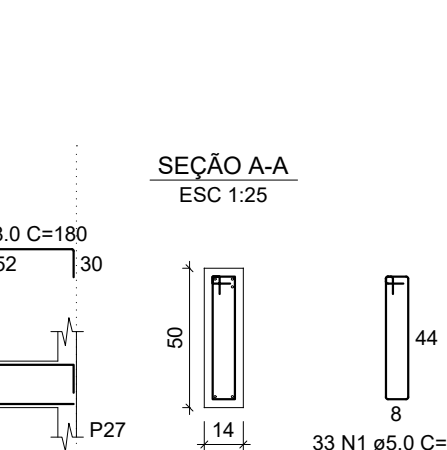
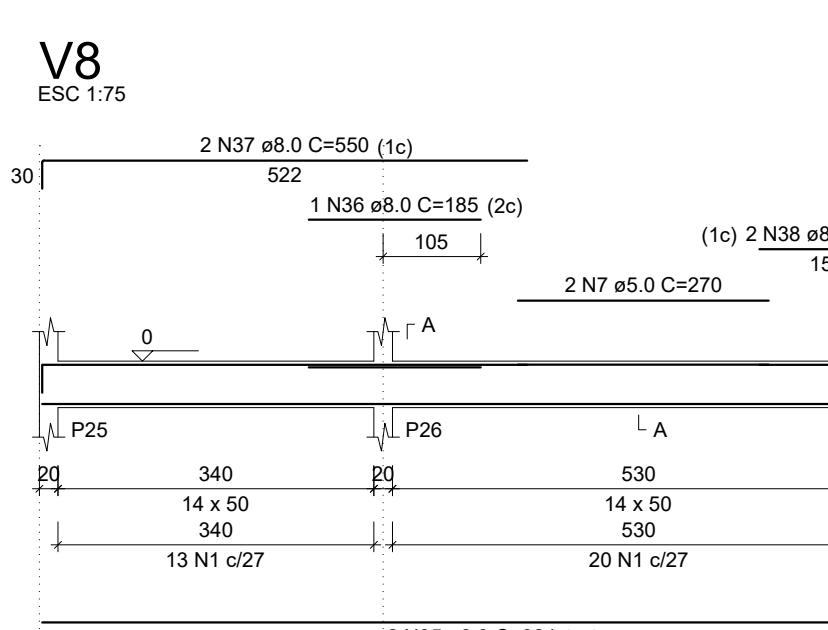
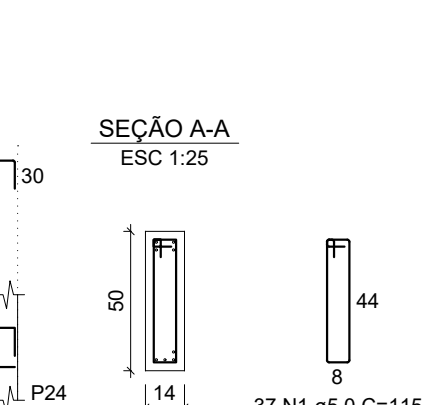
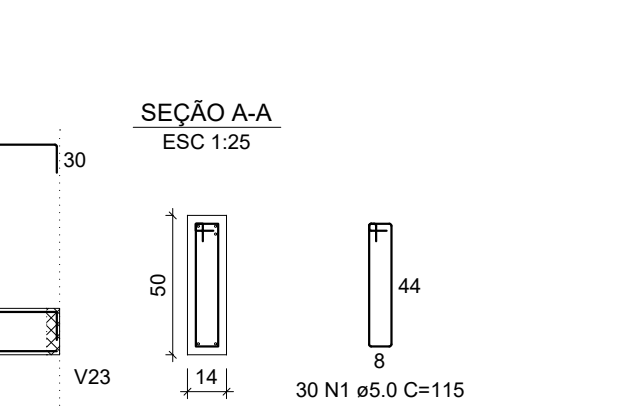
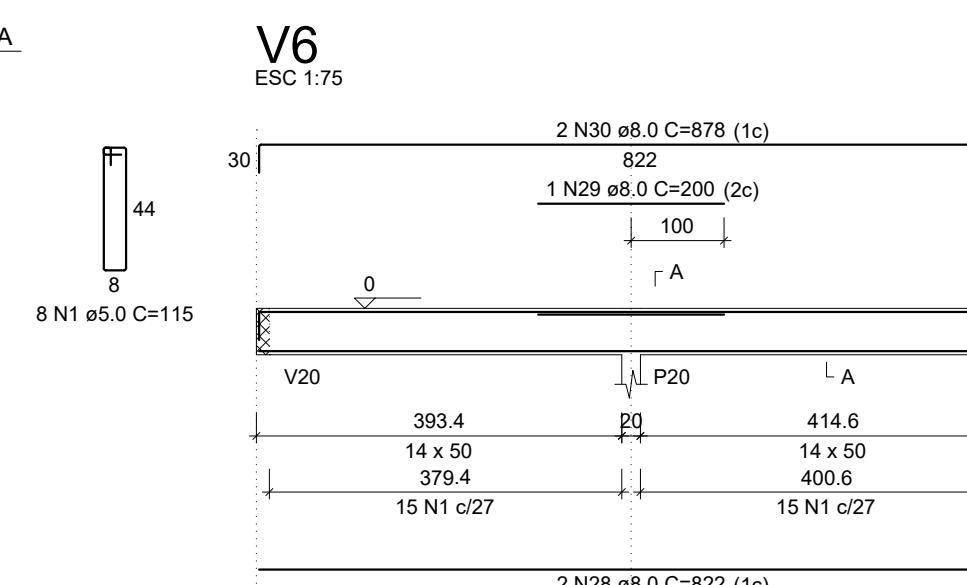
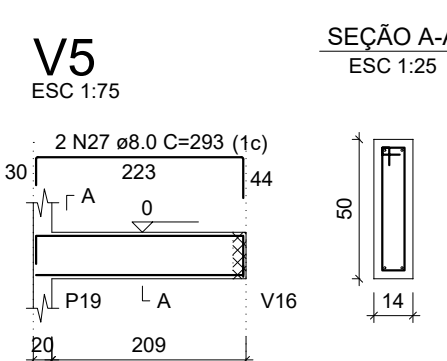
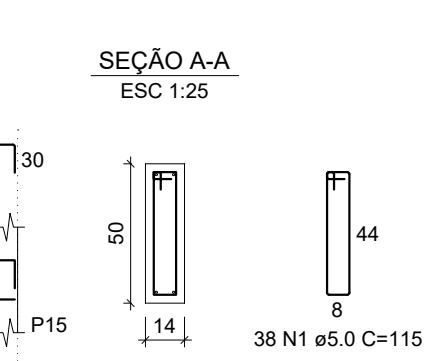
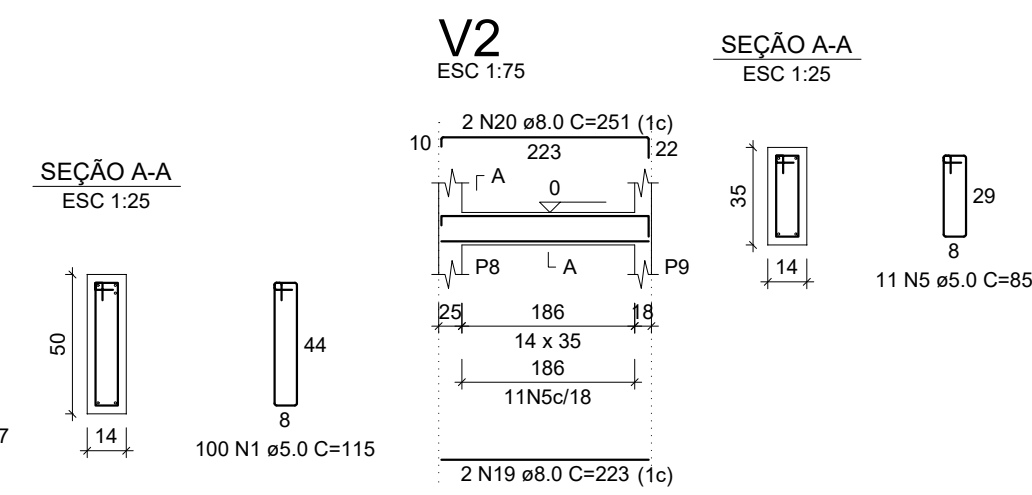
| AÇO             | DIAM (mm) | C.TOTAL (m) |
|-----------------|-----------|-------------|
| CA50            | 8.0       | 742         |
| CA60            | 5.0       | 792.3       |
| PESO TOTAL (kg) |           |             |
| CA50            | 322.1     |             |
| CA60            | 134.3     |             |

Volume de concreto (C-25) = 9.46  
Área de forma = 157.64 m²





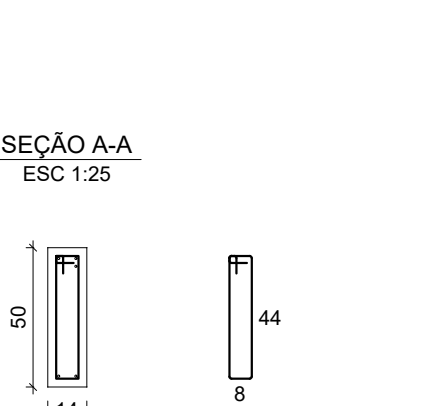
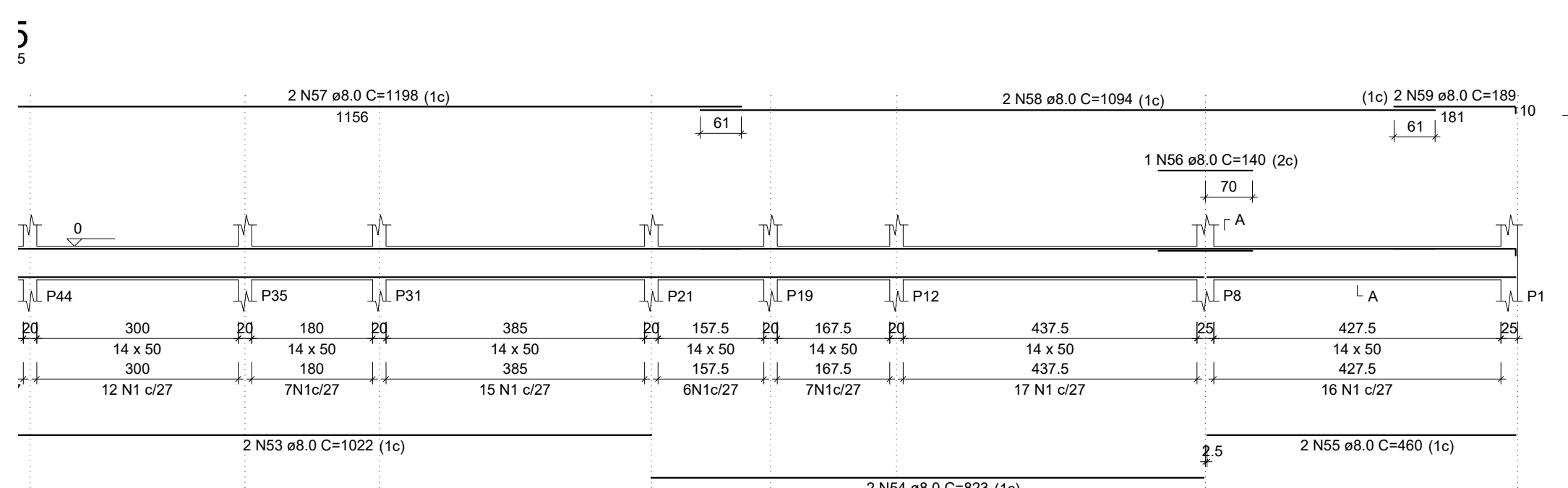
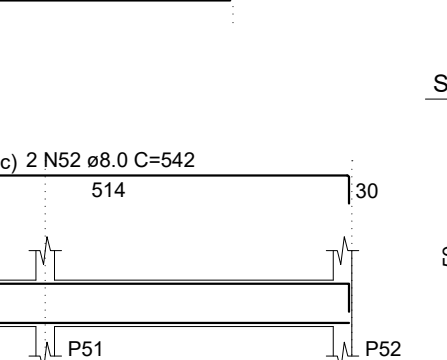
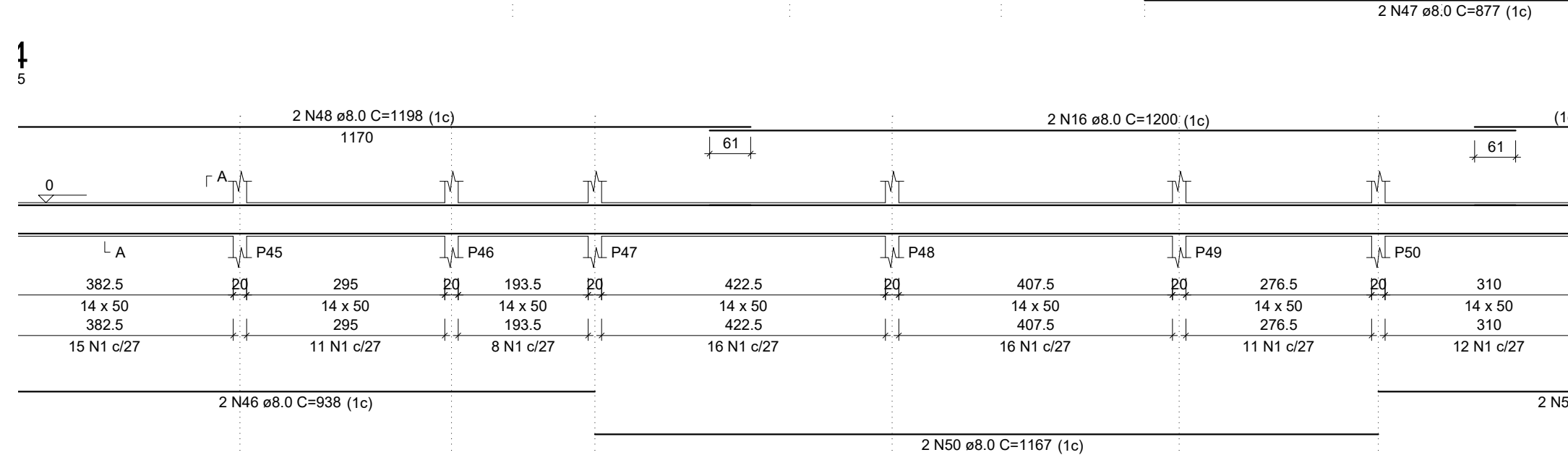
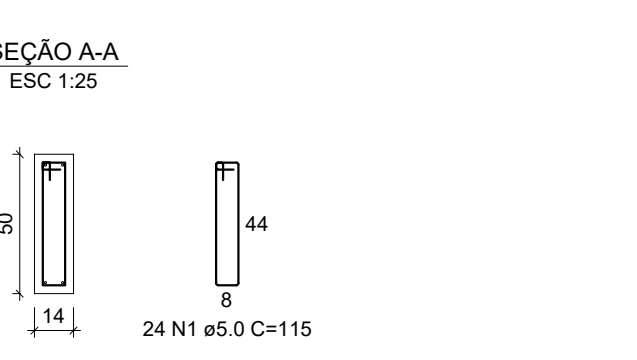
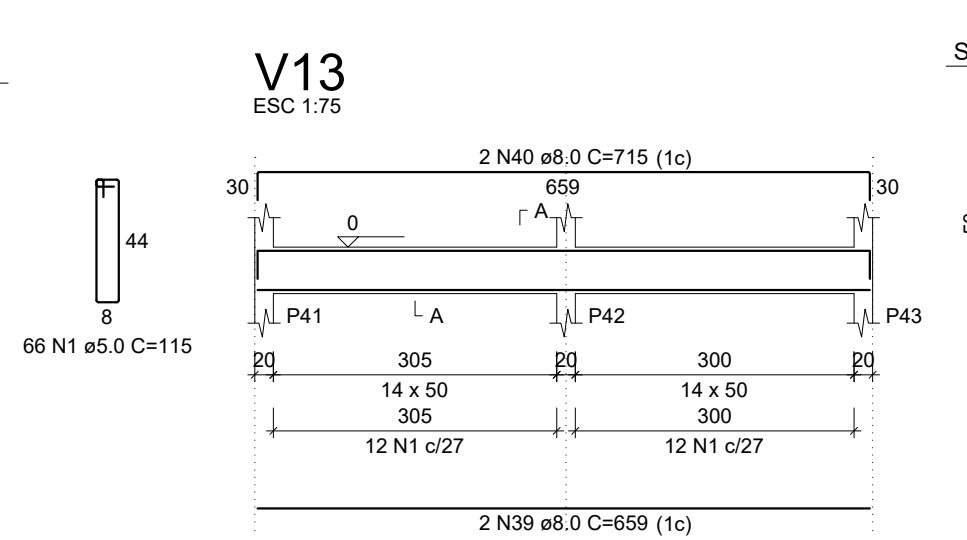
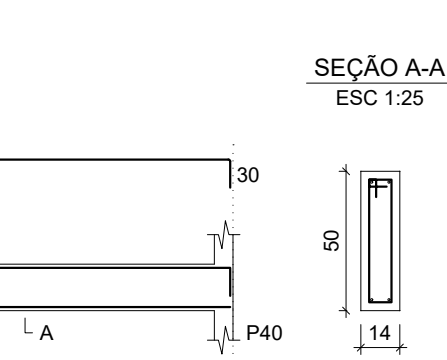
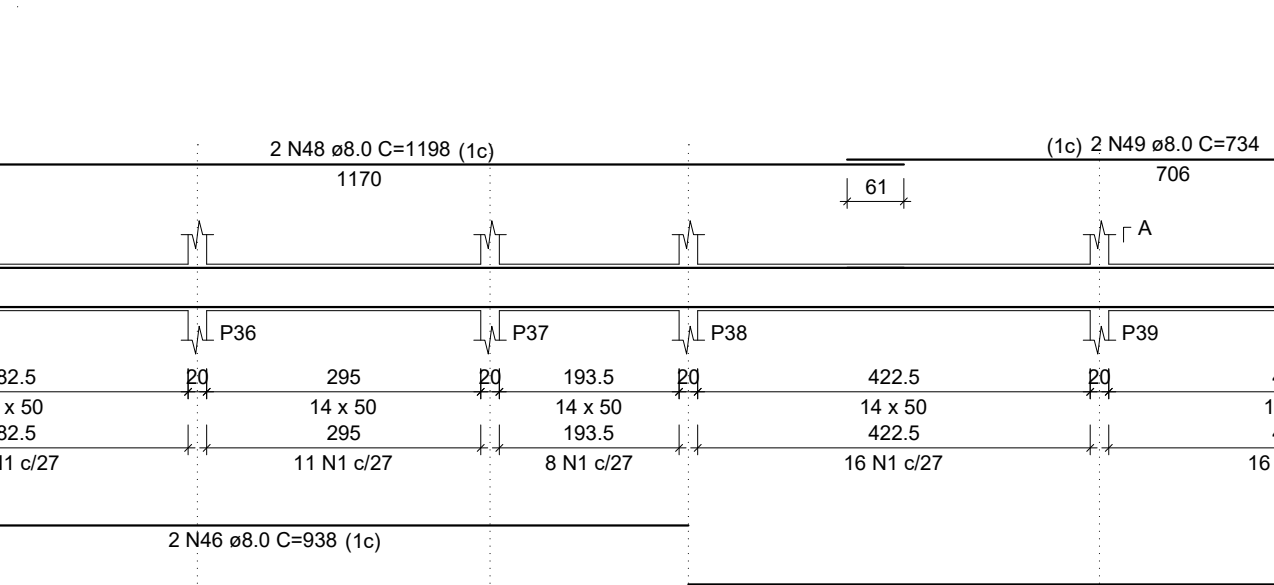
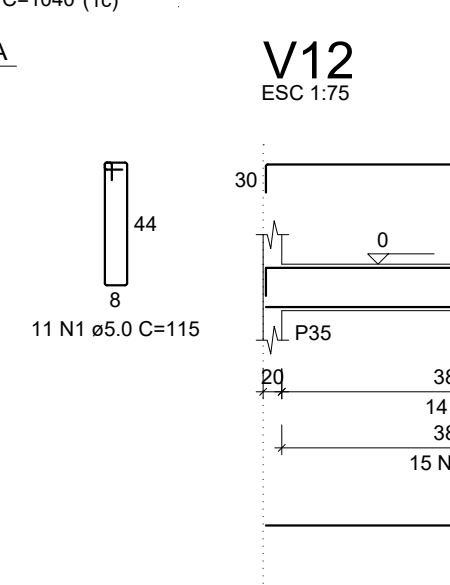




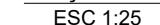
| RELATÃO DO AÇO |     |           |       |            |  |
|----------------|-----|-----------|-------|------------|--|
|                | V1  | V2        | V3    |            |  |
|                | V4  | V5        | V6    |            |  |
|                | V7  | V8        | V9    |            |  |
|                | V10 | V11       | V12   |            |  |
|                | V13 | V14       | V15   |            |  |
| AÇO            | N   | DIAM (mm) | QUANT | CUNIT (cm) |  |
| CA60           | 1   | 5,0       | 584   | 115        |  |
|                | 2   | 5,0       | 2     | 220        |  |
|                | 3   | 5,0       | 2     | 221        |  |
|                | 4   | 5,0       | 2     | 263        |  |
|                | 5   | 5,0       | 11    | 85         |  |
| CA50           | 6   | 5,0       | 2     | 233        |  |
|                | 7   | 5,0       | 2     | 270        |  |
|                | 8   | 8,0       | 2     | 712        |  |
|                | 9   | 10,0      | 2     | 1043       |  |
|                | 10  | 11        | 2     | 365        |  |
|                | 11  | 8,0       | 1     | 175        |  |
|                | 12  | 13,0      | 2     | 305        |  |
|                | 13  | 13,0      | 4     | 165        |  |
|                | 14  | 8,0       | 1     | 125        |  |
|                | 15  | 8,0       | 2     | 148        |  |
|                | 16  | 10,0      | 2     | 287        |  |
|                | 17  | 18,0      | 2     | 202        |  |
|                | 18  | 22,0      | 2     | 351        |  |
|                | 19  | 24,0      | 2     | 374        |  |
|                | 20  | 25,0      | 2     | 500        |  |
|                | 21  | 28,0      | 2     | 331        |  |
|                | 22  | 27,0      | 2     | 293        |  |
|                | 23  | 28,0      | 2     | 821        |  |
|                | 24  | 30,0      | 3     | 200        |  |
|                | 25  | 30,0      | 2     | 278        |  |
|                | 26  | 31,0      | 1     | 198        |  |
|                | 27  | 33,0      | 1     | 243        |  |
|                | 28  | 33,0      | 2     | 340        |  |
|                | 29  | 34,0      | 1     | 185        |  |
|                | 30  | 35,0      | 1     | 954        |  |
|                | 31  | 37,0      | 2     | 920        |  |
|                | 32  | 38,0      | 2     | 715        |  |
|                | 33  | 38,0      | 4     | 659        |  |
|                | 34  | 40,0      | 4     | 180        |  |
|                | 35  | 41,0      | 1     | 272        |  |
|                | 36  | 42,0      | 2     | 416        |  |
|                | 37  | 43,0      | 2     | 402        |  |
|                | 38  | 45,0      | 2     | 309        |  |
|                | 39  | 45,0      | 3     | 365        |  |
|                | 40  | 46,0      | 4     | 938        |  |
|                | 41  | 47,0      | 2     | 877        |  |
|                | 42  | 48,0      | 2     | 1194       |  |
|                | 43  | 48,0      | 2     | 738        |  |
|                | 44  | 50,0      | 2     | 1167       |  |
|                | 45  | 50,0      | 2     | 657        |  |
|                | 46  | 51,0      | 2     | 542        |  |
|                | 47  | 53,0      | 2     | 522        |  |
|                | 48  | 54,0      | 2     | 623        |  |
|                | 49  | 55,0      | 2     | 460        |  |
|                | 50  | 56,0      | 1     | 440        |  |
|                | 51  | 57,0      | 2     | 1198       |  |
|                | 52  | 58,0      | 2     | 1084       |  |
|                | 53  | 58,0      | 2     | 989        |  |

| AÇO                | DIAM<br>(mm) | C.TOTAL<br>(m) | PESO +<br>(kg) |
|--------------------|--------------|----------------|----------------|
| CA50               | 8.0          | 675            |                |
| CA60               | 5.0          | 704.9          |                |
| PESO TOTAL<br>(kg) |              |                |                |
| CA50               | 293          |                |                |
| CA60               | 119.5        |                |                |

Volume de concreto (C-25) = 10.62 m<sup>3</sup>  
Área de forma = 172.93 m<sup>2</sup>



|  |       |   |                          |
|--|-------|---|--------------------------|
|  <div style="display: inline-block; vertical-align: middle; margin-left: 10px;"> <p><b>MINISTÉRIO DA EDUCAÇÃO</b></p> <p><b>INSTITUTO FEDERAL DE EDUCAÇÃO, CIÊNCIA E TECNOLOGIA</b></p> <p><b>PROREITORIA DE DESENVOLVIMENTO INSTITUCIONAL</b></p> <p><b>DIRETORIA DE INFRAESTRUTURA</b></p> </div> |       |   |                          |
| <h2 style="margin: 0;">PROJETO EXECUTIVO ESTRUTURAL</h2>   |       |   |                          |
| APROVAÇÃO CORPO DE BOMBEIROS<br><br><div style="border: 1px solid black; height: 150px; margin-top: 10px;"></div>  |       | APROVAÇÃO PREFEITURA MUNICIPAL<br><br><div style="border: 1px solid black; height: 150px; margin-top: 10px;"></div> |                          |
| RESPONSÁVEL TÉCNICO<br><br><div style="border: 1px solid black; height: 150px; margin-top: 10px;"></div>   |       | INSTITUTO FEDERAL DO PIAUÍ<br><br><div style="border: 1px solid black; height: 150px; margin-top: 10px;"></div>     |                          |
| Data:<br><div style="border: 1px solid black; padding: 5px; text-align: center; margin-top: 5px;"> <b>CONSTRUÇÃO CAMPUS 2024</b> </div>  |       | Endereço:<br><br><div style="border: 1px solid black; height: 40px; margin-top: 5px;"></div>                        |                          |
| Conteúdo da prancha:<br><div style="border: 1px solid black; padding: 5px; text-align: center; margin-top: 5px;"> <b>XXXXXXX</b> </div>  |       |   |                          |
| Responsável Técnico:<br><br><div style="border: 1px solid black; height: 40px; margin-top: 5px;"></div>  |       |   |                          |
| Op. de CAD:  | Data: | Escala:<br>indicada   | Revisão:<br><b>FINAL</b> |



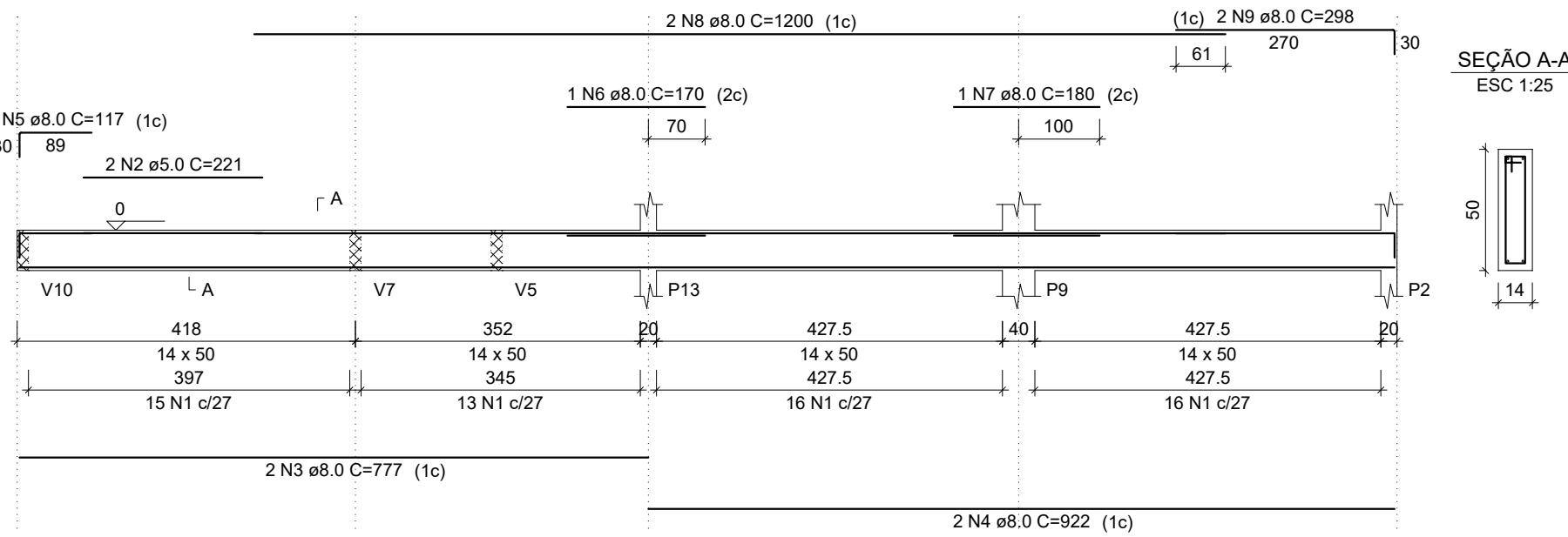
| RELATÃO DO AÇO |     |              |       |               |
|----------------|-----|--------------|-------|---------------|
| V16            |     | V17          |       |               |
| V19            |     | V20          |       |               |
| V22            |     | V23          |       |               |
| V25            |     | V26          |       |               |
| ACO            | N   | DIAM<br>(mm) | QUANT | CUBIC<br>(m³) |
| CA60           | 1   | 5,0          | 390   |               |
|                | 2   | 5,0          |       |               |
|                | 3   | 8,0          | 2     |               |
|                | 4   | 8,0          | 2     |               |
|                | 5   | 8,0          | 2     |               |
|                | 6   | 8,0          | 1     |               |
|                | 7   | 8,0          | 1     |               |
|                | 8   | 8,0          | 2     | 12            |
|                | 9   | 8,0          | 2     | 2             |
|                | 10  | 8,0          | 2     | 2             |
|                | 11  | 8,0          | 2     | 6             |
|                | 12  | 8,0          | 2     | 6             |
|                | 13  | 8,0          | 4     | 11            |
| CA50           | 14  | 8,0          | 4     | 11            |
|                | 15  | 8,0          | 6     |               |
|                | 16  | 8,0          | 6     |               |
|                | 17  | 8,0          | 3     |               |
|                | 18  | 8,0          | 2     |               |
|                | 19  | 8,0          | 2     |               |
|                | 20  | 8,0          | 2     |               |
|                | 21  | 8,0          | 2     |               |
|                | 22  | 8,0          | 4     |               |
|                | 23  | 8,0          | 4     |               |
|                | 24  | 8,0          | 2     |               |
|                | 25  | 8,0          | 2     |               |
|                | 26  | 8,0          | 1     |               |
| 27             | 8,0 | 2            | 10    |               |
| 28             | 8,0 | 2            | 10    |               |
| 29             | 8,0 | 2            | 8     |               |
| 30             | 8,0 | 2            | 8     |               |
| 31             | 8,0 | 2            | 11    |               |
| 32             | 8,0 | 2            | 10    |               |
| 33             | 8,0 | 2            | 10    |               |


| RESUMO DO AÇO      |              |                |     |
|--------------------|--------------|----------------|-----|
| AÇO                | DIAM<br>(mm) | C.TOTAL<br>(m) | PES |
| CA50               | 8.0          | 457.4          |     |
| CA60               | 5.0          | 452.9          |     |
| PESO TOTAL<br>(kg) |              |                |     |
| CA50               | 198.5        |                |     |
| CA60               | 76.8         |                |     |

Volume de concreto (C-25) = 7.12 m<sup>3</sup>  
Área de forma = 115.96 m<sup>2</sup>



V16  
ESC 1:75



|   |   |
|---|---|
|  | <b>INSTITUTO FEDERAL DE EDUCAÇÃO, CIÊNCIA E TECNOLOGIA DA PARAÍBA</b> |
|   | Reitoria  |
|   | Av. João da Mata, 256, Jaguaribe, CEP 58015-020, Joao Pessoa (PB)     |
|   | CNPJ: 10.783.898/0001-75 - Telefone: (83) 3612.9701                   |

Documento Digitalizado Ostensivo (Público)

PROJETOS DE ENGENHARIA - PROJETO ESTRUTURAL - CONSTRUÇÃO SEDE PRÓPRIA -  
UNIDADE: CAMPUS SAPÉ - IFPB

|                      |  |
|----------------------|--|
| Assunto:             | PROJETOS DE ENGENHARIA - PROJETO ESTRUTURAL - CONSTRUÇÃO SEDE PRÓPRIA -<br>UNIDADE: CAMPUS SAPÉ - IFPB |
| Assinado por:        | Carlos Diego   |
| Tipo do Documento:   | Projeto  |
| Situação:            | Finalizado   |
| Nível de Acesso:     | Ostensivo (Público)  |
| Tipo do Conferência: | Cópia Simples  |

Documento assinado eletronicamente por:

- Carlos Diego dos Santos Carvalho, ASSISTENTE EM ADMINISTRACAO, em 28/10/2024 09:29:10.

Este documento foi armazenado no SUAP em 28/10/2024. Para comprovar sua integridade, faça a leitura do QRCode ao lado ou acesse <https://suap.ifpb.edu.br/verificar-documento-externo/> e forneça os dados abaixo:

Código Verificador: 1292233  
Código de Autenticação: c10a8a3e38

